

Wineries of The Seaway Trail

Many New Wineries to Visit!



By Michael Warren Thomas

This wine tour along the Seaway Trail will introduce you to families with generations of winemaking tradition, entrepreneurs, retirees changing careers, and farmers trying to reinvent their farms for the 21st century. While there is a long history of wine-making around Lake Ontario, Lake Erie and the Finger Lakes, the last 30 years have finally reversed the decline caused by prohibition. The Seaway Trail includes the fastest growing wine region in New York State which is now the Niagara Escarpment, with a dozen wineries and a dozen in progress.

Some might argue that the NYS and PA wine business is near saturation with almost 300 wineries, but in contrast the Napa Valley has about that many in a valley 30 miles long and at most five miles wide. As one looks at the world wide recognition of the Napa Valley, it is surprising that most of that growth has occurred in the last 30 years. Robert Mondavi built the first winery designed as a tourist attraction in 1966 when there were only 7 wineries in Napa and by the 1980's the Napa Valley was a major international tourist destination.

The New York State and Pennsylvania wine industry is accelerating its growth, helping to drive the expansion of tourism in this region. Enjoy the sights, sounds and smells of the wineries in 2008, but come back frequently to watch it grow. The wine tour begins in an unlikely place, along the St. Law-

rence River in Ogdensburg. Although it may be hard to believe, there are wineries in all 50 states (North Dakota was the last one) including areas even colder than northern New York.

River Myst Winery

www.rivermystwinery.net;
315-713-4702

9830 State Highway 37, Ogdensburg, NY 13669; Wednesday-Friday 2pm-6pm, Saturday 10am-6pm and Sunday 12pm-5pm.

New York's northernmost winery opened in March 2007, and is currently the only winery located in St. Lawrence County. Denise and Randy LaMay offer the typical wines such as a Chardonnay or Merlot, but are becoming more known for our fruit flavored wines such as our Galop Island Grapefruit and their Black Lake Berry. They have also recently added two ice wines to the wine list. They can be contacted by phone or at their website. They look forward to providing you with a taste of the north country.

The Thousand Islands - Seaway Wine Trail was created in 2005 and meanders through 78 miles of the historic and wonderfully scenic Jefferson County. The wine trail consists of the Thousand Islands Winery - Alexandria Bay, Yellow Barn Winery - Watertown, Otter Creek Winery - Philadelphia, and Seaway Cold Hardy Grape Nursery - Evans Mills. Each of the wineries are family owned operations that offer

great hospitality and represent only a small portion of this area's diverse agricultural industry.

Thousand Islands Winery

www.thousandislandswinery.com;
315-482-9306; 43298 Seaway Ave, Suite #1, Alexandria Bay, NY 13607; April 15-June 14 10-6pm daily, June 15-Sept. 8 10-8pm daily, Sept. 8-Dec.31 10-6pm, Jan. 1-April 14 10-5pm

The Thousand Islands Winery is near I-81 in Alexandria Bay. Stephen and Erika Conaway opened their winery in July 2003 after Major Conaway retired from the 10th Mountain Division, which is based at Fort Drum, after serving in Afghanistan. The old dairy barn has been renovated into the winery's tasting room and banquet area and the main house dates back to 1836. There are 3 acres of grapes planted and the primary grape varieties now include Frontenac, Frontenac Gris, LaCrescent, and Marquette. These are cold hardy grape varieties can withstand -35F and have been developed by the University of Minnesota.



Steve Conaway at the Thousand Islands Winery Bottle Area

Yellow Barn Winery

www.yellowbarnwinery.com;
315-782-1829; 18876 County Route 66,
Watertown, NY 13601

The Yellow Barn Winery is located just outside the historic village of Sackets Harbor. This region can have snow in May and frost in early September, as well as temperatures of minus 40 F. The cold hardy grapes include Steuben, Frontenac and Geisenheim. These three varieties are among the nine wines produced at this new winery, which started planting grapes in 2002. They are proud to note that 90 cents of every dollar purchase goes back into the local economy, a key reason to search out these interesting new wineries throughout New York State.

Ashley Lynn Winery

www.ashleywines.com; 315-963-3262;
4142 State Rt. 104, Mexico NY 13114;
Mid-April to Dec. 31

The Hurlbut family started producing apple wine in 1996 with a recipe from Grandpa Hurlbut dating back to 1928. Since then they have added a dry apple wine and a variety of blends, including apple cranberry, apple strawberry, elderberry mist, peachy keen, raspberry rush, apple grape, apple white grape, and apple cherry. Prices of these fruit wines are very approachable, with most of Ashley Lynn's in the \$8 range. The winery has recently added a tasting room on the west side of Seneca Lake.

Taking a detour off the route around Lake Ontario, there are several fantastic wine trails in the Finger Lakes. The Cayuga Wine Trail includes Montezuma Winery adjacent to the breathtaking Montezuma National Wildlife Refuge, Montezuma Winery specializes in Fruit, Grape and Honey Mead wines that will amaze you. The wine list offers over 30 different award winning wines ranging from dry to sweet and include Riesling, Merlot, Blueberry, Rhubarb, Black Currant Apple and the almost world famous, Cranberry Bog. In 2008 they will begin producing and selling Premium Vodka

made from honey as well as other distilled products. The extensive gift shop is filled with over 4,000 of the most unique gifts in the area 315-568-8190, 2981 Auburn Road, corners Rts. 5 & 20 and Rt. 89, Seneca Falls, NY 13148. www.montezumawinery.com

Long Point and Treleven wineries are on the east side of Cayuga Lake. On the west side of the lake there are excellent winery restaurants such as Sheldrake Point and Knapp Vineyards (seasonal restaurant). Other wineries include Thirsty Owl, Buttonwood Grove, Cobblestone Farm, Americana, Swedish Hill, Lucas, Hosmer, Lakeshore, Six Mile Creek, Goose Watch, Cayuga Ridge and Bellweather Hard Cider. Note: The difference between hard cider and apple wine is the percent alcohol. Hard cider is under 7% alcohol, and very popular in France and England.

Cayuga Wine Trail

www.cayugawinetrail.com;
800-684-5217

Events for 2008

April 26-27 & May 3-4

Herb & Wine Festival

July 24-27 Grapehound Wine Tour

November 22-23 & December 6-7

Holiday Shopping Spree

Check the websites of the Keuka and Seneca Lake Wine Trails for many additional events throughout the year in the Finger Lakes.

www.senecalakewinetrail.com

www.keukawinetrail.com

Thorpe Vineyards

www.ThorpeVineyard.com;
315-594-2502; 8150 Chimney Heights
Blvd., Wolcott, NY 14590; April - Dec.
11-6pm Fri.-Sun. 11-6pm, 5pm in
Nov/Dec., daily July-October.

Thorpe Vineyard, "The Little Winery on the Great Lake!" is celebrating it's 20th Anniversary in 2008. It is located just a half-mile from the Chimney Bluffs, one of New York State's natural wonders on the east side of Sodus Bay. At Thorpe Vineyard, four acres of grapes are carefully grown and hand-crafted into a small amount

of fine wines. The selection includes classic European varieties, New World blends and popular hybrids.

For a quick drive from Rochester, the Canandaigua Wine Trail starts with Casa Larga in Fairport and includes the Finger Lakes Wine Center at Sonnenberg Gardens, which serves tastings from over 30 NYS wineries in a beautiful tasting room and gift shop. www.sonnenberg.org In 2006 the New York Wine & Culinary Center opened in Canandaigua, with classes, wine tastings, small plates of seasonal foods and special events. www.nywcc.com

Niagara Landing Wine Cellars

www.niagaralanding.com; 716-433-8405,
com; 4434 Van Dusen Rd, Cambria, NY
14094; Mon-Sat 10-6, Sunday Noon
to 6, winter hours: January-April
Noon-6pm daily

At the base of the Niagara Escarpment West of Rochester and 20 minutes East of Niagara Falls, family viticulturists have been offering premium grapes for three generations. Although juice grapes have been grown in this area for over 100 years, it was Niagara Landing Wine Cellars that opened the first winery along Lake Ontario between Rochester and Buffalo in 1998. The winery produces 13 different wines ranging from Merlot, Pinot Noir and Chardonnay, to the native grapes in favorites like Boxer Blush, Captain's Choice, Misty Niagara and Stearman Steuben. Rounding out the selection, Niagara Landing offers sparkling wine and port.

Warm Lake Estate

www.warmlakeestate.com; 716-731-
5900; 3868 Lower Mountain Road,
Cambria, NY 14094; Mon.-Sat. 10-5,
Sunday 12-5pm

The second winery to open in the Lockport area was Warm Lake Estate and after only two vintages, it has established itself as the first cult winery in Upstate New York. The first two vintages were sold out before any wine was bottled. This practice of selling

New Wineries continued pg.54

www.seawaytrail.com

from *New Wineries* pg.43

futures has only been used by a few wineries in the NY/PA region. Michael Von Heckler decided to concentrate exclusively on Pinot Noir, perhaps the most difficult grape to grow. Pinot Noir is highly susceptible to fungus attack and also is known as a challenging grape to coax into fine wine.

For many years it was perplexing why the Canadian side of the Niagara River had dozens of fine wineries, some within a few hundred yards of the river, while the U.S. side of the river had no wineries at all on the same escarpment that extends beyond Rochester. This anomaly is beginning to be corrected with several new projects in the Lockport area, following in the footsteps of Warm Lake Estate and Niagara Landing Wine Cellars.

Eveningside Vineyards www.evenside.com, 4794 Lower Mountain Road, Cambria, NY 14094. Opening July 3, 2004 - Saturdays & Sundays through Labor Day.

Within two miles of Warm Lake Estate, the Biehl family planted Chardonnay, Riesling and Cabernet Franc in 2001 and will release their first wine in the summer of 2004. Recognizing the similarity of the climate and geography of Lockport and Ontario, Canada, the Biehl's called Angelo Pavan (winemaker) and Kevin Latter (vineyard manager) of Cave Spring Cellars in Jordan, Ontario. (www.cavespringcellars.com) Founded nearly 20 years ago, Cave Spring Cellars has been a leader in the Ontario wine industry and is only minutes west of the Niagara River

South of Buffalo and along the south edge of Lake Erie is one of the largest grape growing regions in the entire country. Prior to Prohibition, there were many wineries in the region producing over two million gallons from grapes such as Catawba, which is a native *Labrusca* grape. The grapes grown in Chautauqua County have more recently been Concord and Niagara for the grape juice industry, headed by Welch's which was based in

Westfield, NY starting in 1897. Wineries participating in the Chautauqua Wine Trail include several in Pennsylvania, just a few miles from the NYS border.

Merritt Estate Winery

www.merrittestatewinery.com;
888-965-4800; 2264 King Rd, Forestville, NY 14062; Mon.-Sat. 10-5pm, Sunday 12-5pm



Drink in the atmosphere - and the wine on the deck at Merritt Estate Winery

Merritt Estate Winery, established in 1976, was the first in Chautauqua County to begin operations under the New York State Farm Wine Act, which reinvigorated the New York State wine industry. The wines are produced under the direction of Jason Merritt, now the third generation to be involved in the winery. Tour the modern winemaking facility and enjoy a sample of their award winning wine in the tasting room and gift shop. They are open year round offering free winery tours and wine tasting.

Woodbury Vineyards

www.woodburyvineyards.com;
716-679-9463; 3230 S. Roberts Road, Fredonia, NY 14063; Mon.-Sat. 9-5pm, Sun. 10-5pm

Woodbury Vineyards has been a leader in innovation, selling shares in the winery to customers. The Fredonia Free Tasting Room is only five minutes from the NYS Thruway. Bus tours are welcome with picnic tables & a pavilion available for visitors. Ask about the "adopt a barrel" program or have your wine label personalized for special occasions.

Vetter Vineyards Winery

www.vettervineyards.com;
716-326-3100; 8005 Prospect Station Road, Westfield, NY 14787

Vetter Vineyards Winery opened in 1987 and was purchased in 2003 by Mark & Barbara Lancaster. They grow twenty different grape varieties and produce 25 different wines, including local favorites such as Niagara, Concord and Catawba. The winery specializes in reds with varieties such as Pinot Noir, Shiraz, Cabernet Sauvignon, Zweigelt and many others.

Johnson Estate Winery

www.johnsonwinery.com;
800-374-6569; 8419 West Main Road, Westfield, NY 14787; Daily 10-6pm

With so many new wineries in past ten years, Johnson Estate seems even older than their 43 years. The owners are very proud to be an exclusively "Estate Grown and Bottled" winery. This term indicates that the entire wine making process from grape growing to pressing to bottling happens on the property. Only wineries that satisfy these conditions can use the term on their bottle. While it is not a guarantee of quality, the level of control that Estate Grown and Bottled demands, often leads to excellent wines. Johnson Estate produces many unique wines including their white and red Ipocras, which are spiced wines produced from a very old recipe. Their semi-sweet Liebestropfchen, Little Love Drops, is very popular, as well as the wide range of red and white wines.

Mazza Chautauqua Cellars

www.mazzawines.com; 716-269-3000;
4717 Chautauqua Stedman Road, Rt. 33, Mayville, NY

Situated along Lake Chautauqua less than a half of a mile from the entrance to the Chautauqua Institution, Mazza Chautauqua Cellars was established in 2005 and is focused on creating fine wines and distilled beverages. The stunning building, with its 'green' designation is reminiscent of the Mazza family's Italian heritage.



Mazza Chautauqua Cellars and Mazza Vineyards feature new and unique array of wines

The winery features a new and unique array of wines. A functioning copper pot still for the production of brandy and eau de vie is in full view, which can be taken in while sampling the wines or enjoying a light meal at the café.

Sparkling Ponds Winery

www.sparklingponds.com; 716 736-4525 or 814 547-2848; 10661 West Lake Road US Route 5, Ripley, NY 14775

The twenty hand crafted small batch wines from Sparkling Ponds winery include European style dry reds, spicy Gewurztraminer, citrus accented Riesling and American classics such as Concord and Catawba, rich Niagara Ice Wine, sparkling varieties and their signature Woman Pleaser. The winery is easily accessible along US Route 5 the Seaway Trail near the NY-PA state line.

Blueberry Sky Farm Winery

www.blueberryskyfarm.com; 716-252-6535; 10243 NE Sherman Road, Ripley, NY 14775

The Heinerts family started making fruit wines in 1998, using some of the berries from 1800 blueberry bushes. In addition they make elderberry, blackberry, strawberry, plum, rhubarb, peach and the rarely found dandelion wine. Dandelion wine is made from the flowers in the tradition of the old country, and is definitely an acquired taste. Blueberry Sky is also one of the only places to find cooking wines such as garlic, jalapeno (Silver medal at NY Wine & Food Classic), onion and tomato.

Erie County, Pennsylvania

Mazza Vineyards

www.mazzawines.com; 814-725-8695; 11815 East Lake Road Rt. 5 the Seaway Trail, North East, PA; Mon.-Sat. 9-8pm for July & August, Mon.-Sat. 9-5:30pm for Sept.-June, Sundays 12-4:30pm all year

Within three miles of the New York border are several wonderful wineries in Pennsylvania, one of which dates back over 30 years. The Mazza family produces a wide range of wines from Chardonnay and Riesling to Niagara and Chambourcin, as well as Ice Wine, Spiced Apple, Sherry and Port. Although the Mazza family is very proud of their Italian heritage and the winery has a Mediterranean design, the climate dictated that Germanic style wines such as Riesling would do much better than Italian grape varieties. Joseph Mazza immigrated to the United States in 1954, and in 1973 his two sons, Bob and Frank, built the winery. The next generation – Bob’s son Mario – has returned from the wine industry in Australia with a new perspective and energy for Mazza wines.

South Shore Wine Company

www.mazzawines.com/southshore/ ; 814-725.1585, 1120 Freeport Road, Route 89, North East, PA; Open 7 days a week, call for opening times.

Originally established in 1864 and recently re-established by the Mazza Family, the South Shore Wine Company was the first winery established in Erie County Pennsylvania. The tasting room and wine shop are situated in the original stone cavern and cellar built in the early 1860s.

Penn Shore Vineyards


www.pennshore.com; 814-725-8688; 10225 East Lake Road, Route 5 North East, PA 16428

Nestled along the shores of Lake Eire, Penn Shore Vineyards & Winery is one of the first two wineries to open after the Pennsylvania Limited Winery Act was passed in 1968. Beginning

New Wineries continued pg.60

CHAUMONT

THREE MILE BAY



Lion's Club Annual Auction: June 1

Lyme Garder Tour: June 28 (1-4pm)


Willie Putnam Little League Tourney: July 18-20

Lyme Triathlon: Aug 2


Lyme Town Yard Sale: Aug 16-17

Chaumont Three Mile Bay Chamber of Commerce
 PO Box 24,
 Three Mile Bay, NY 13693
 315.649.3404
www.lymenewyork.net

Adams Chaumont Bay Marina
 Boat Dockage • Storage •
 Repairs • Sales
 Seasonal trailer sites now
 available with fill hookups!



1159 Circle Drive
 Chaumont, NY 13622
315.649.5050 315.668.6141



Bay Breeze Golf Links
 CHAUMONT, NY
315.649.GOLF (4653)

from *New Wineries* pg. 55

with seven different wines, Penn Shore has expanded its offerings to 23, from an award winning sweet Concord to a barrel aged Cabernet Sauvignon. Tours are available during the summer months and the back patio is open to the public. Bring a picnic basket and dine on one of the picnic tables.

There is no reason to end your ride into the sunset in North East, PA. Keep in mind that most of the wines along the Seaway Trail may never make it into your local wine & liquor store, so bring a few cases home with you!

Other Seaway Wine Trail wineries include:

Arrowhead Wine Cellars

814.774.3535; www.arrowheadwine.com, 12073 East Main Road, North East, PA 16428

Heritage Wine Cellars

800 747-0083 www.heritagewine.biz
12160 East Main Road, North East, PA 16428

Presque Isle Wine Cellars

814-725-1314; www.piwine.com, 9440 West Main Road, North East, PA 16428

Schulze Vineyards & Winery

716 778-8090 www.schulzewines.com
2090 Coomer Road, Burt, NY 14028

Winery at Marjim Manor

716 778-7001 www.marjimmanor.com
7171 East Lake Road, Appleton, NY 14008

Chautauqua Wine Trail

716-679-1891;

www.chautauquawinetrail.com

Wine Trail events for 2008 include:

May 3-4 Wine & Cheese Weekend

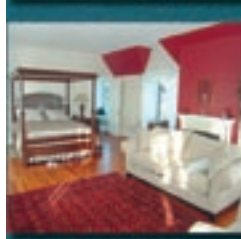
August 9-10 America's Grape Country Wine Festival

Michael Warren Thomas hosts radio shows about restaurants, wine, gardening and travel on WYSL 1040 AM. His shows are also live on the web at www.SavorLife.com.

Welcome to

Singer Castle on Dark Island

It's time for you to visit!



The highlight of the 1000 Islands Region

Easy to reach by Charter and through Tour Boat companies from Alexandria Bay, Morristown and Schermerhorn Harbor!

- Daily visits by trained tour guides
- Wedding ceremonies and party arrangements
- Be King and Queen for the night and stay in the Royal Suite

Call or Click today

1-877-327-5475 or

www.singercastle.com



**HILL'S
MOTOR
COURT**
On the St. Lawrence
24 Bethune Street, Alexandria Bay, NY
315-482-2741
www.hillsmotorcourt.com


Thousand Islands Winery
43298 Seaway Ave., Suite 1, Alexandria Bay, NY 13607
Telephone: (315)482-9306
**OPEN YEAR ROUND
FREE WINERY TOURS &
WINE TASTINGS DAILY**
Check out thousandislandswinery.com for more information on winery events, online shopping, directions, & general info.

Cavallario's
STEAK & SEAFOOD HOUSE
*Fine Dining in a
Casual Atmosphere*
Live Maine Lobster
Steak • Veal • Seafood
Daily Specials
Cocktail Lounge & Entertainment
Church St. Alexandria Bay, NY
315-482-9867

Schermerhorn Harbor

Cottages • General Store • Boat Rental
Marina with Experienced Mechanics
Winter Storage
Full Marine & Parts Store
71 Schermerhorn Landing Road
Hammond, NY 13646
315-324-5966
schermerhornharbor@yahoo.com
www.schermerhornharbor.com